

BENTA DESIGN

---

# PORTFOLIO

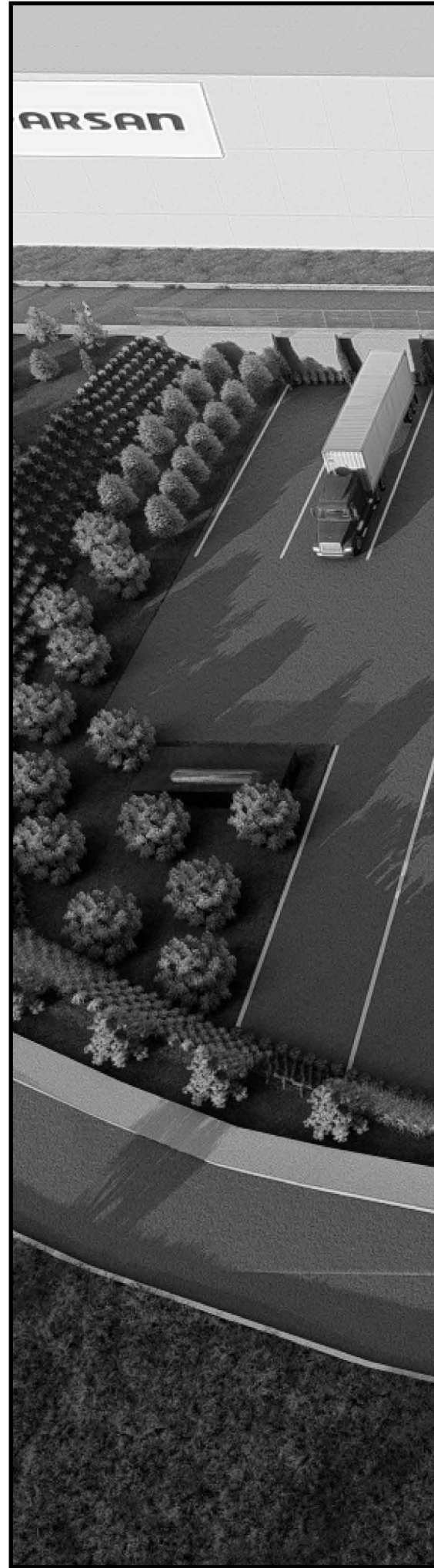
---

INDUSTRIAL & PRODUCT DESIGN





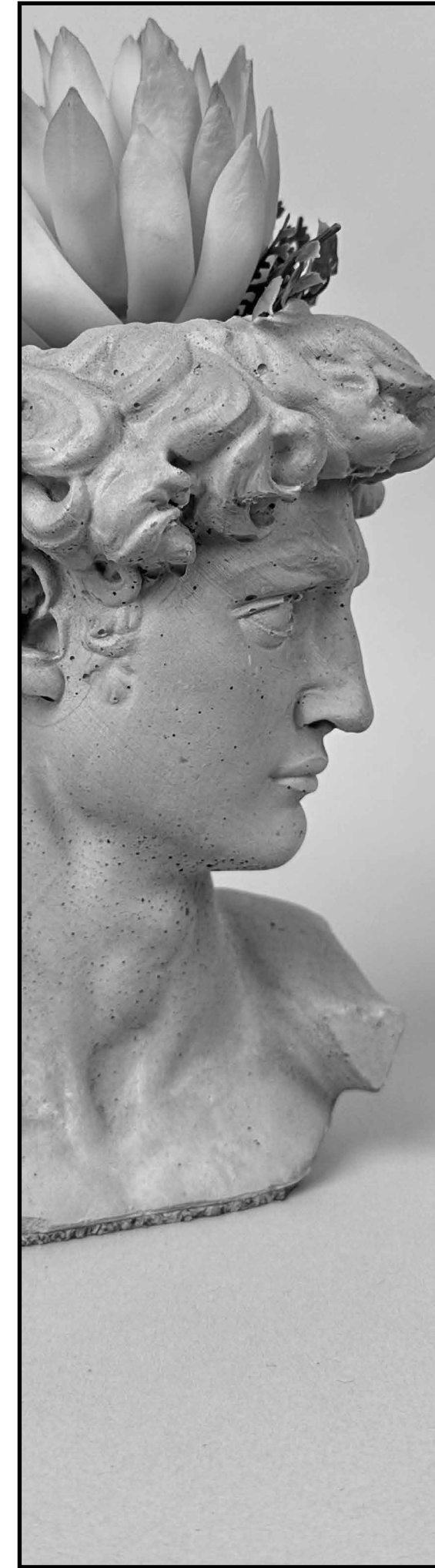
INDUSTRIAL  
DESIGN  
CONSULTANCY  
(04-06)



3D MODELING &  
RENDERING &  
CONCEPT  
PROJECTS  
(04-06)



PACKAGING  
DESIGN  
(18)



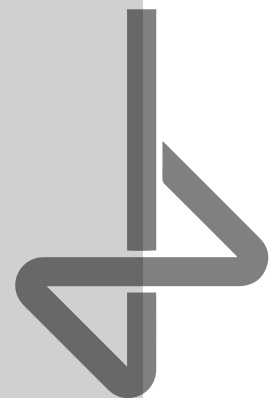
OUR PRODUCTS  
(19-20)

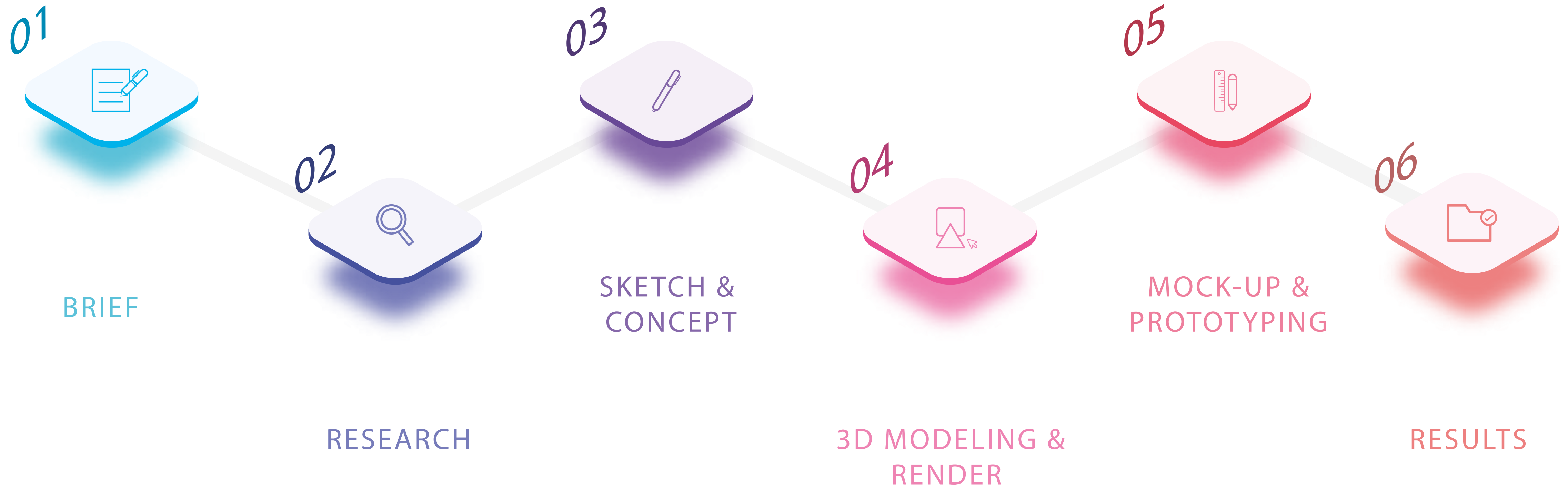


SILICONE  
MOLDING  
& PROTOTYPING  
(21-22)

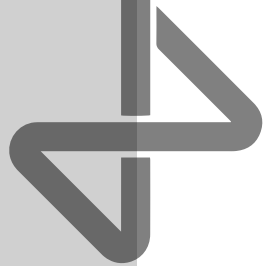
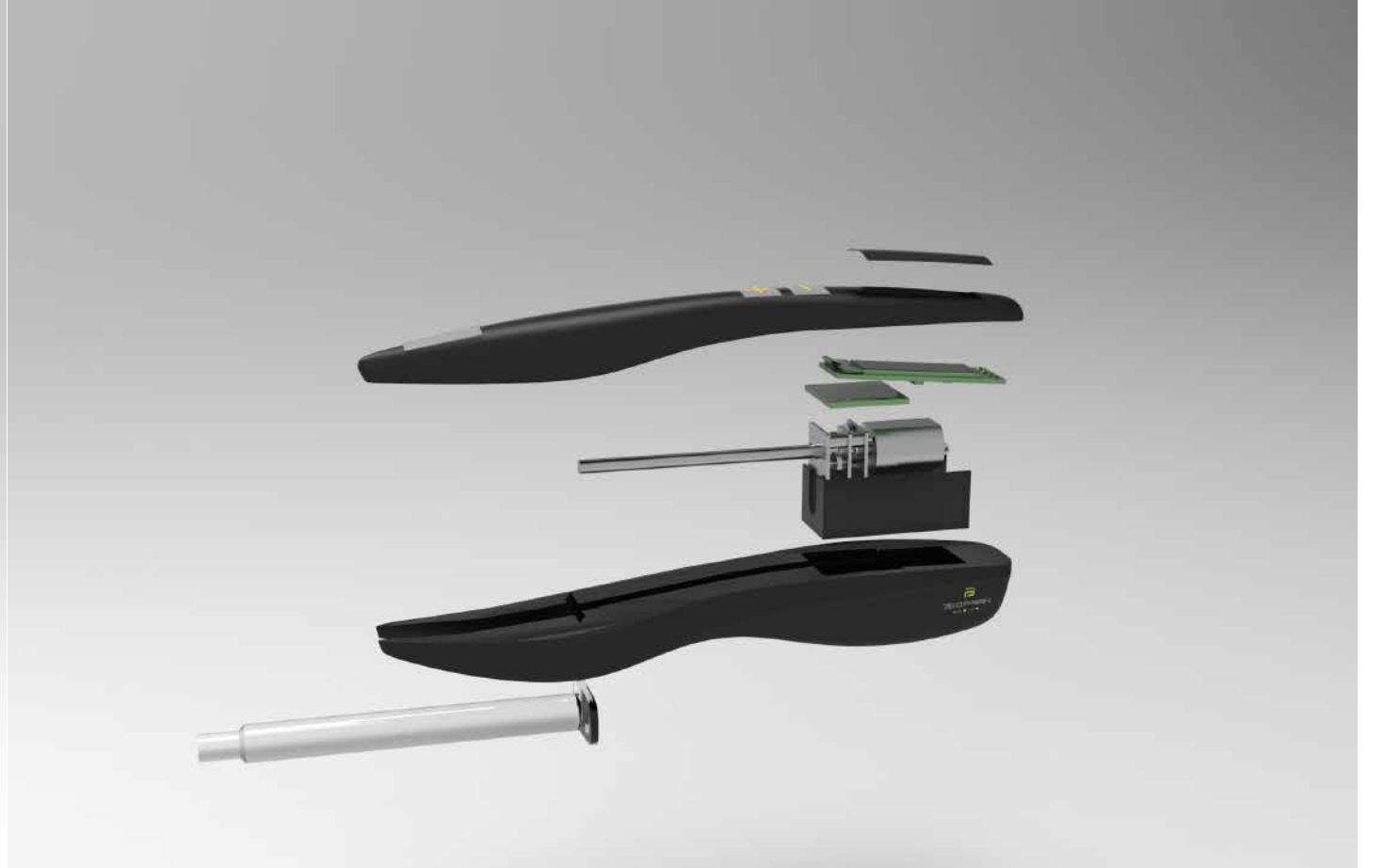
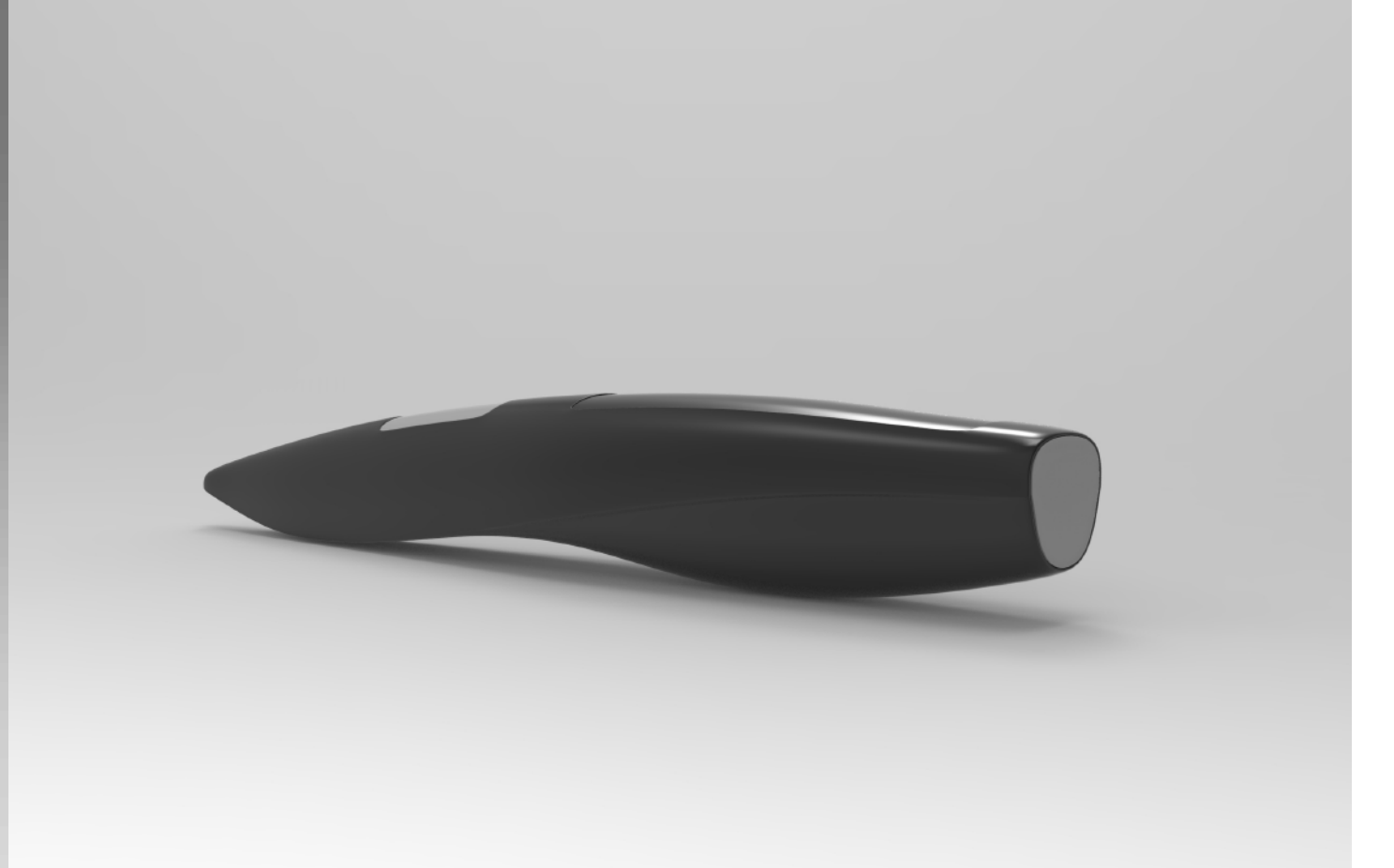
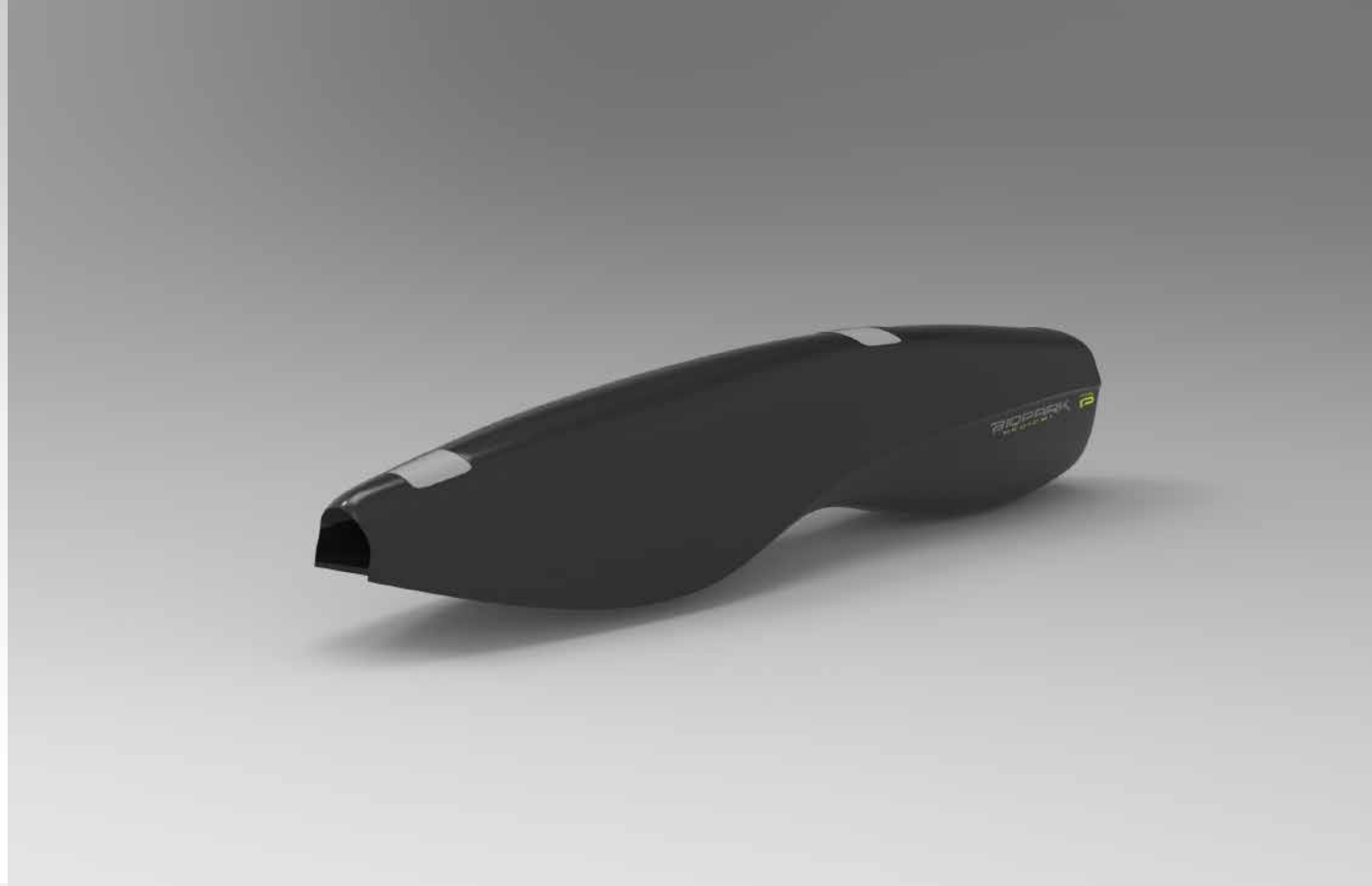


LOGO &  
CORPORATE  
IDENTITY  
(23)

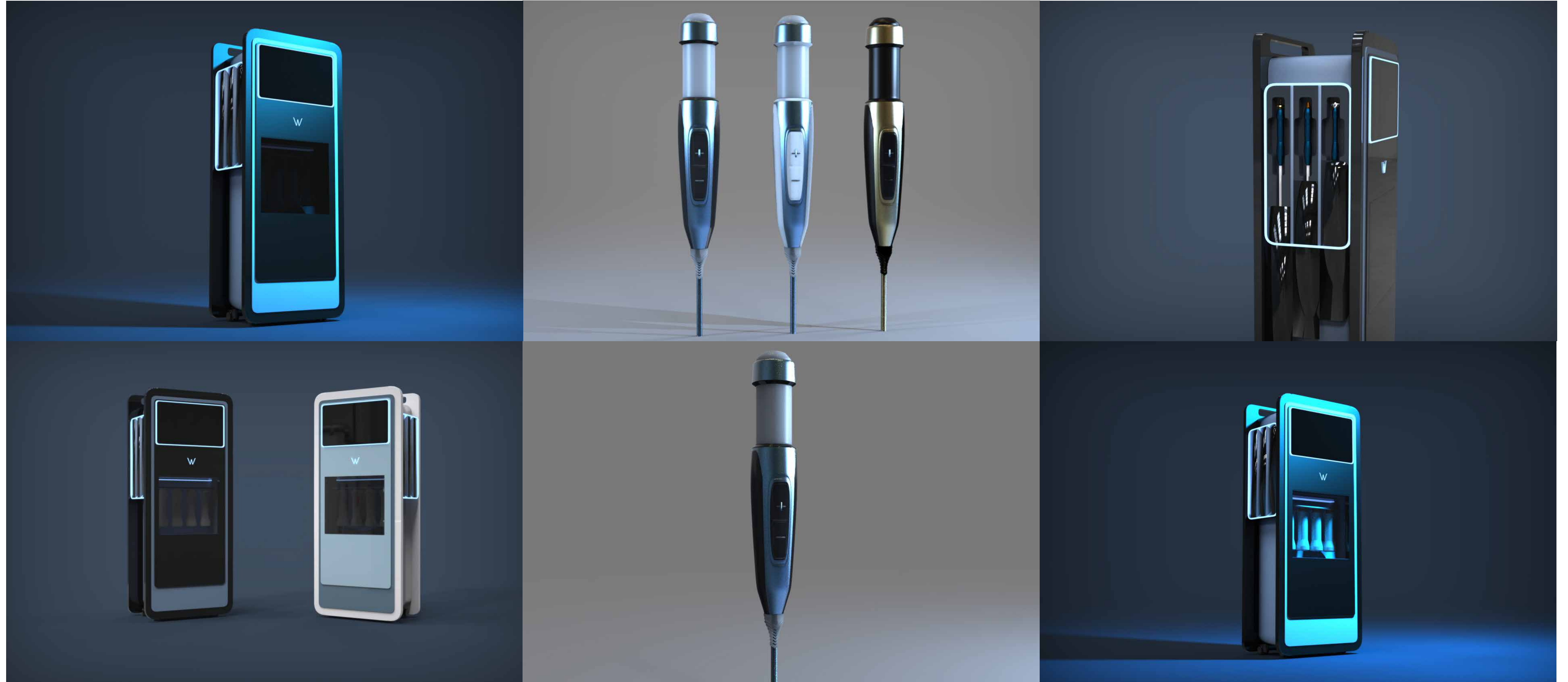




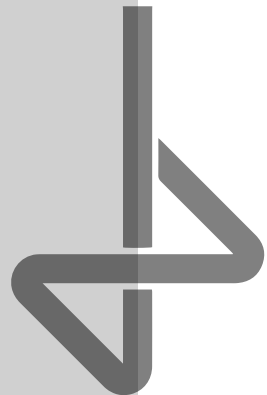
# BOTOX PEN



# HYDRAFACIAL MACHINE



# ELECTRIC UTILITY VEHICLE



# MANİSA DÖKTAS

LANDSCAPE PROJECT



3D MODELING & RENDERING

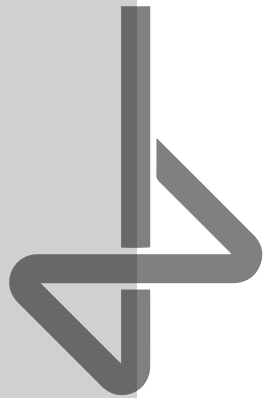
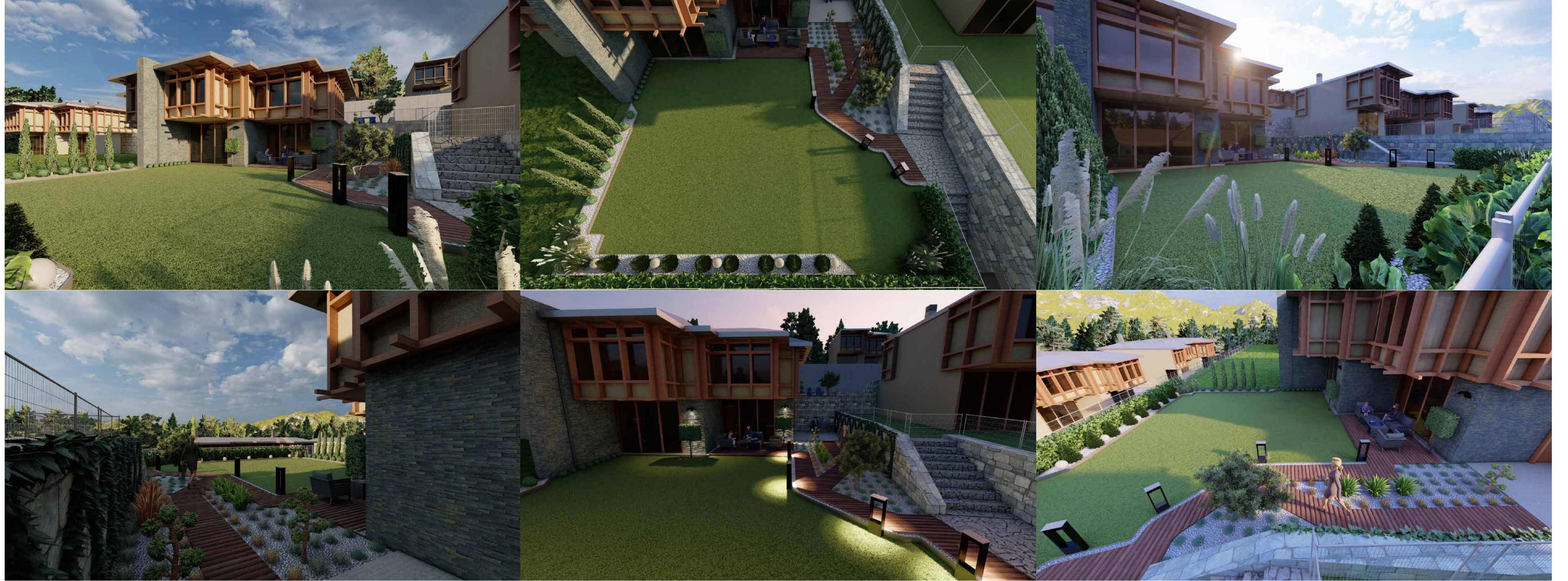






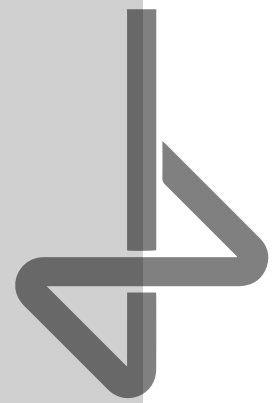
# RİVA DÜŞLER VADİSİ

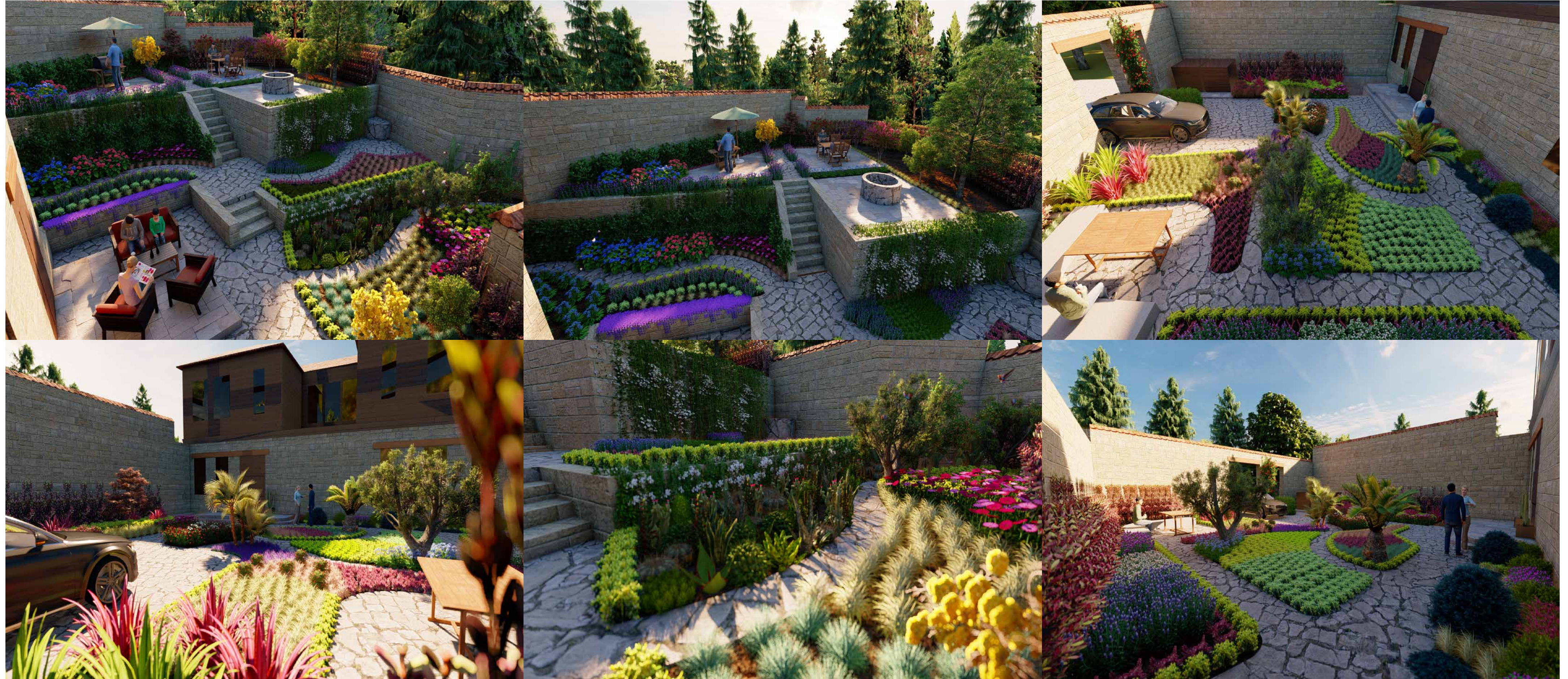
LANDSCAPE PROJECT



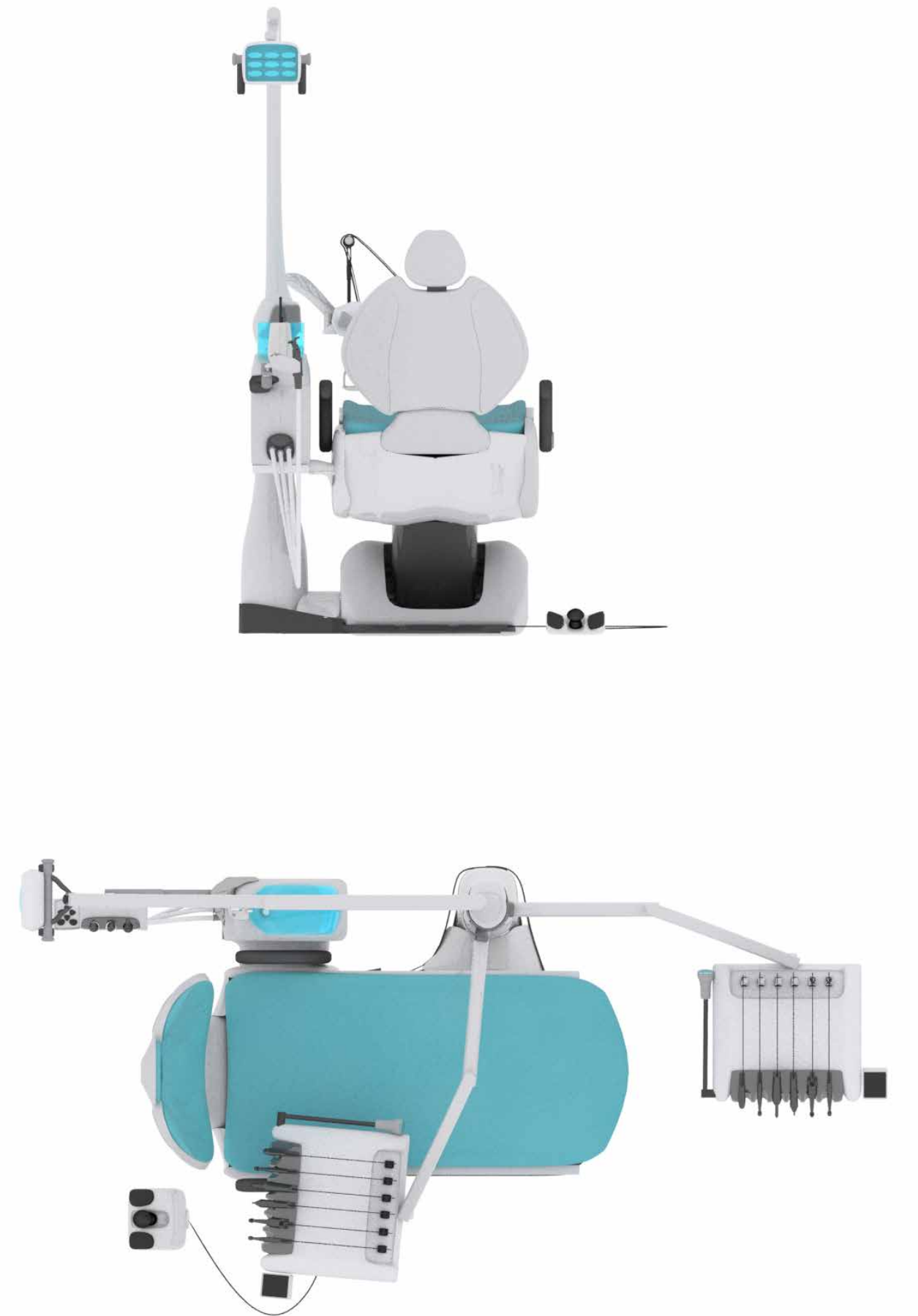
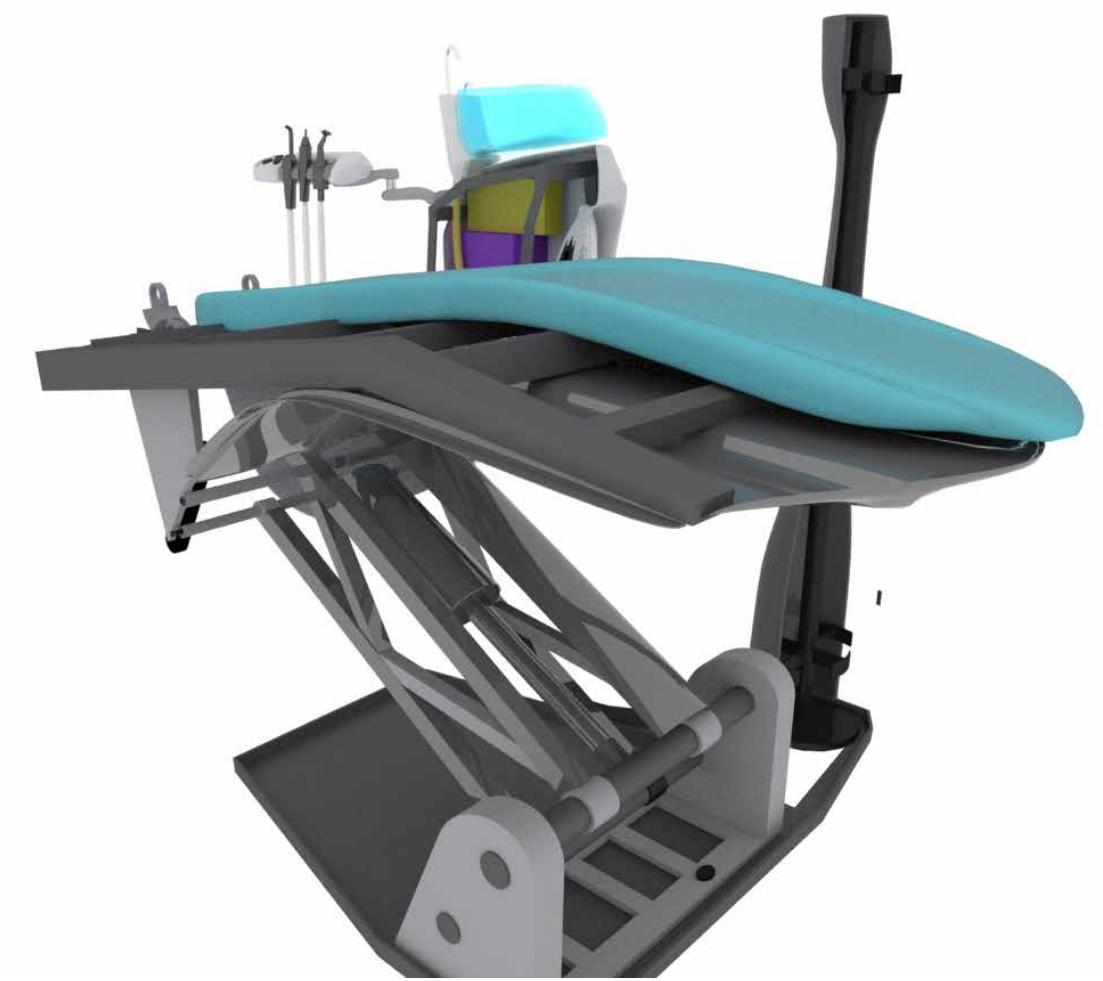
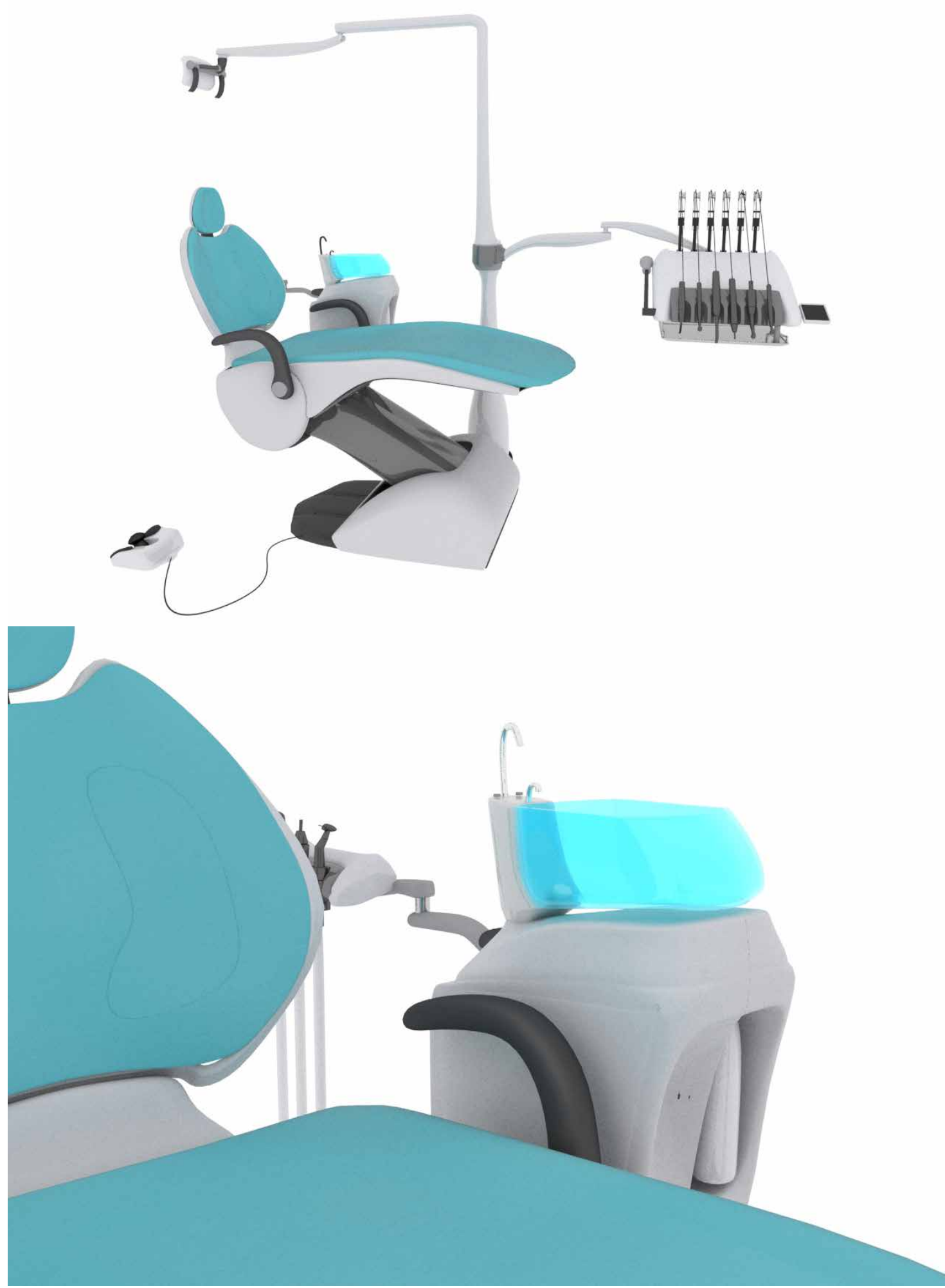
# SANOS AKARETLER

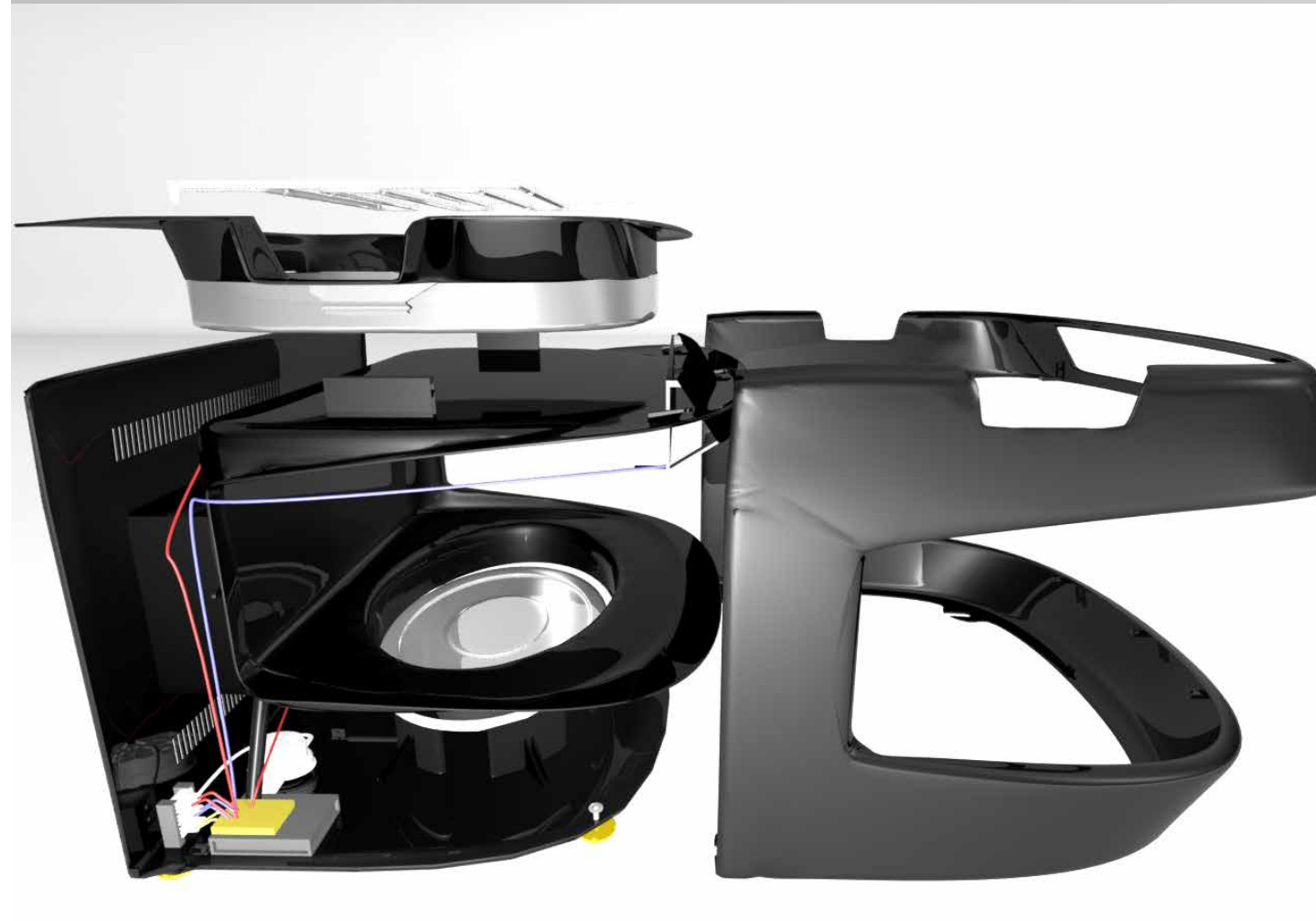
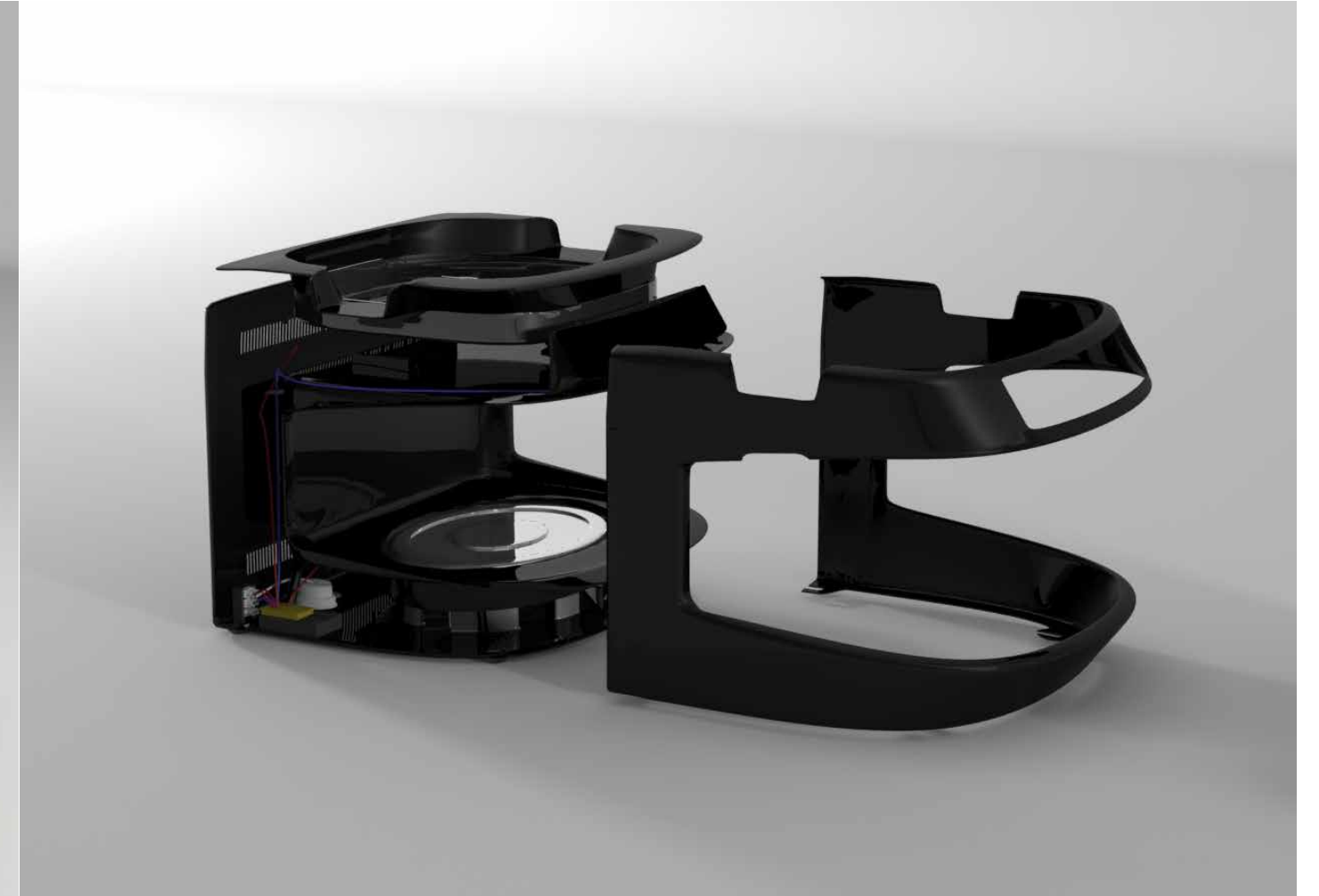
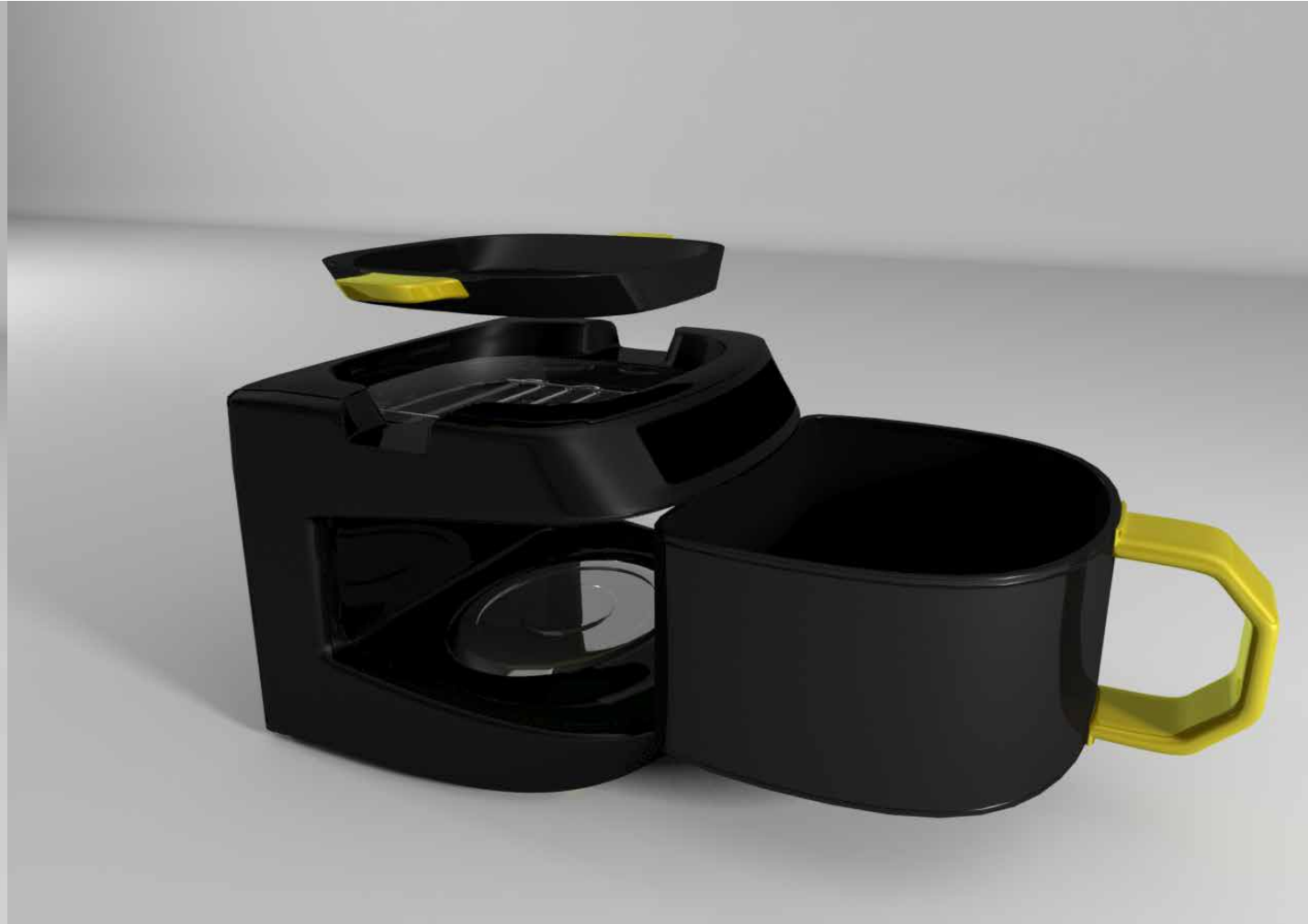
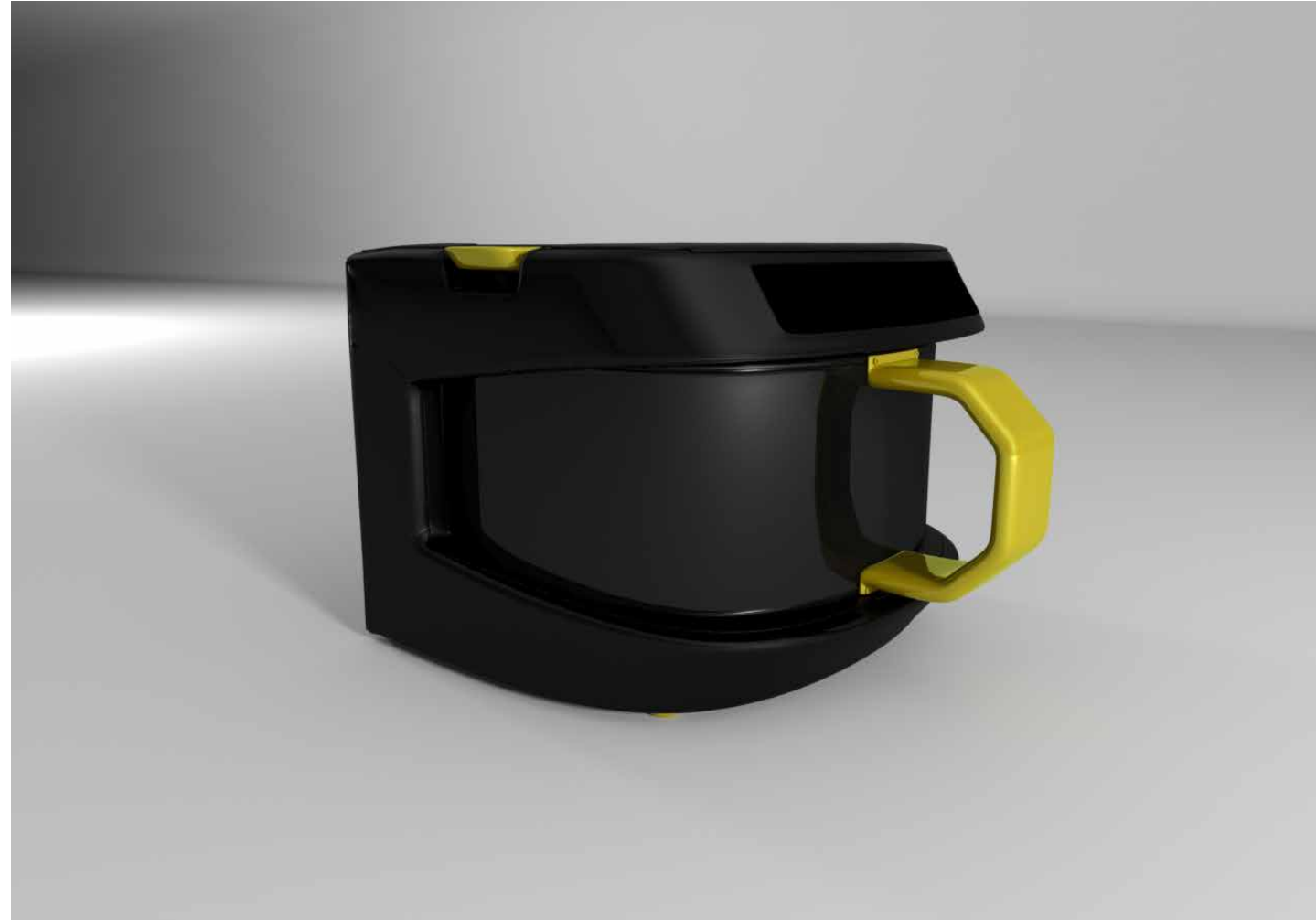
INTERIOR DESIGN PROJECT



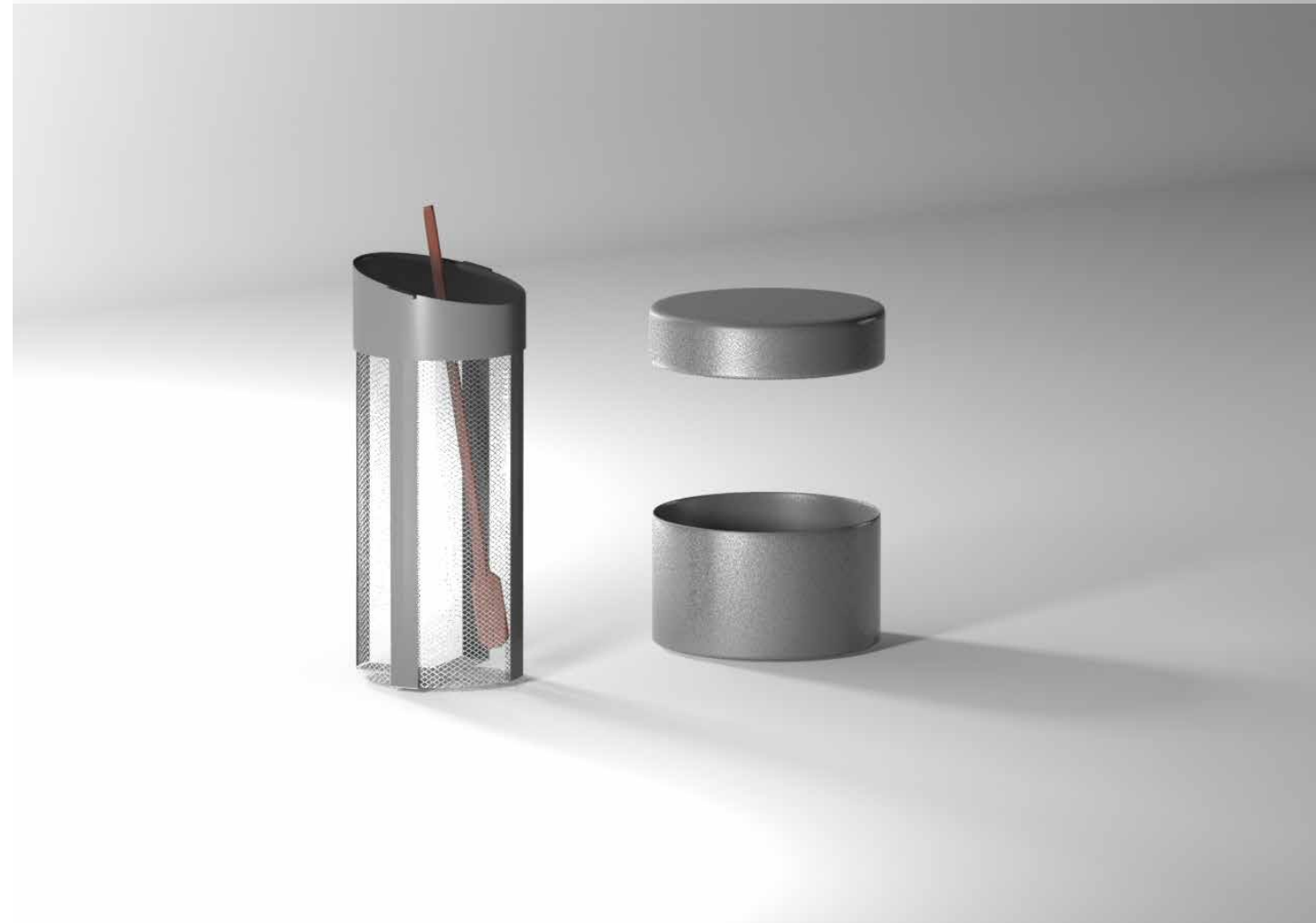
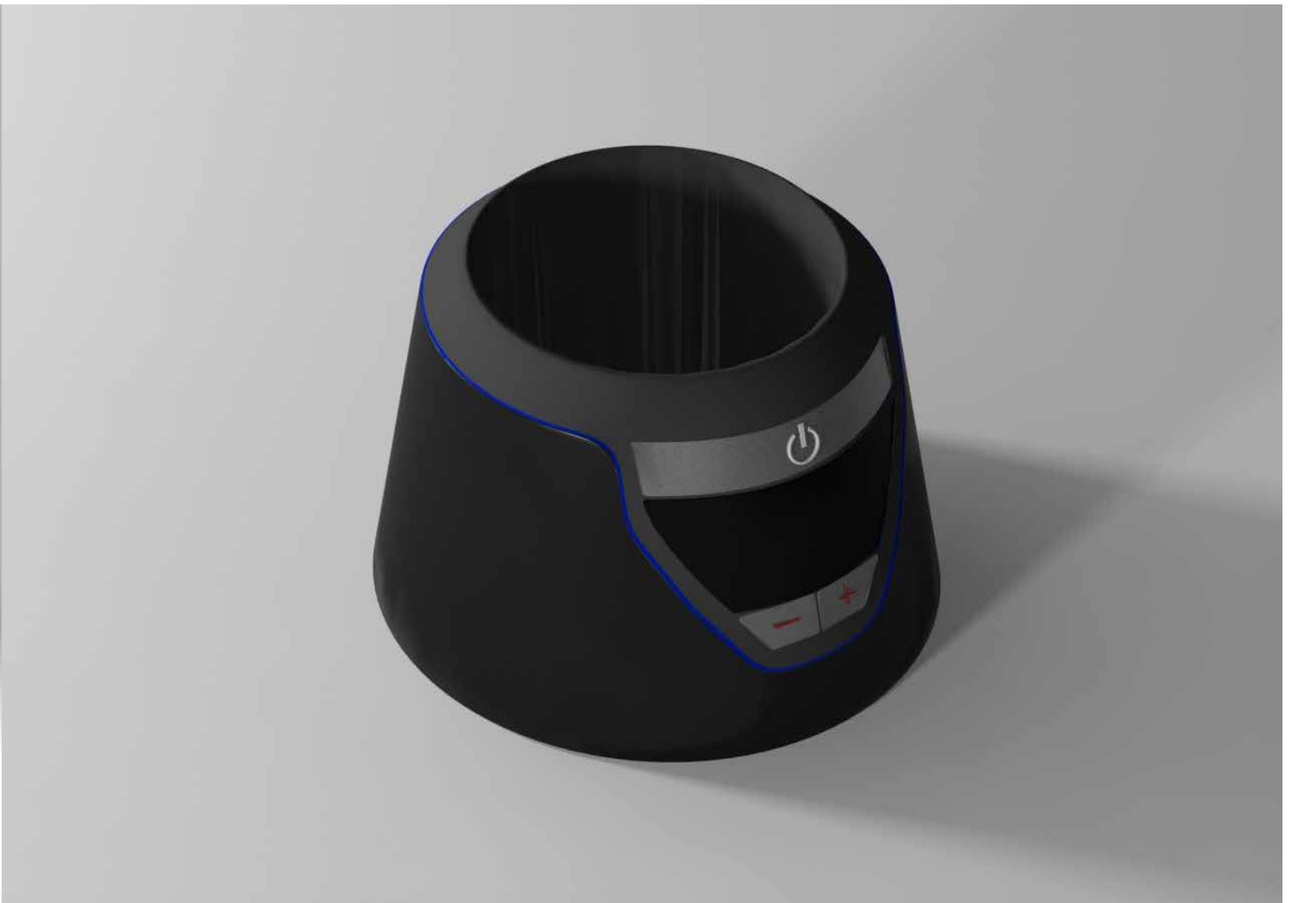


DENTAL UNIT

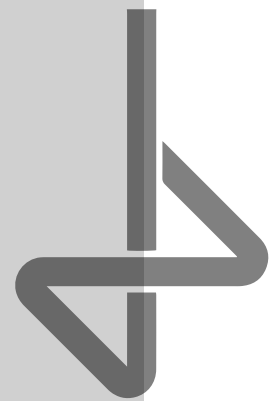




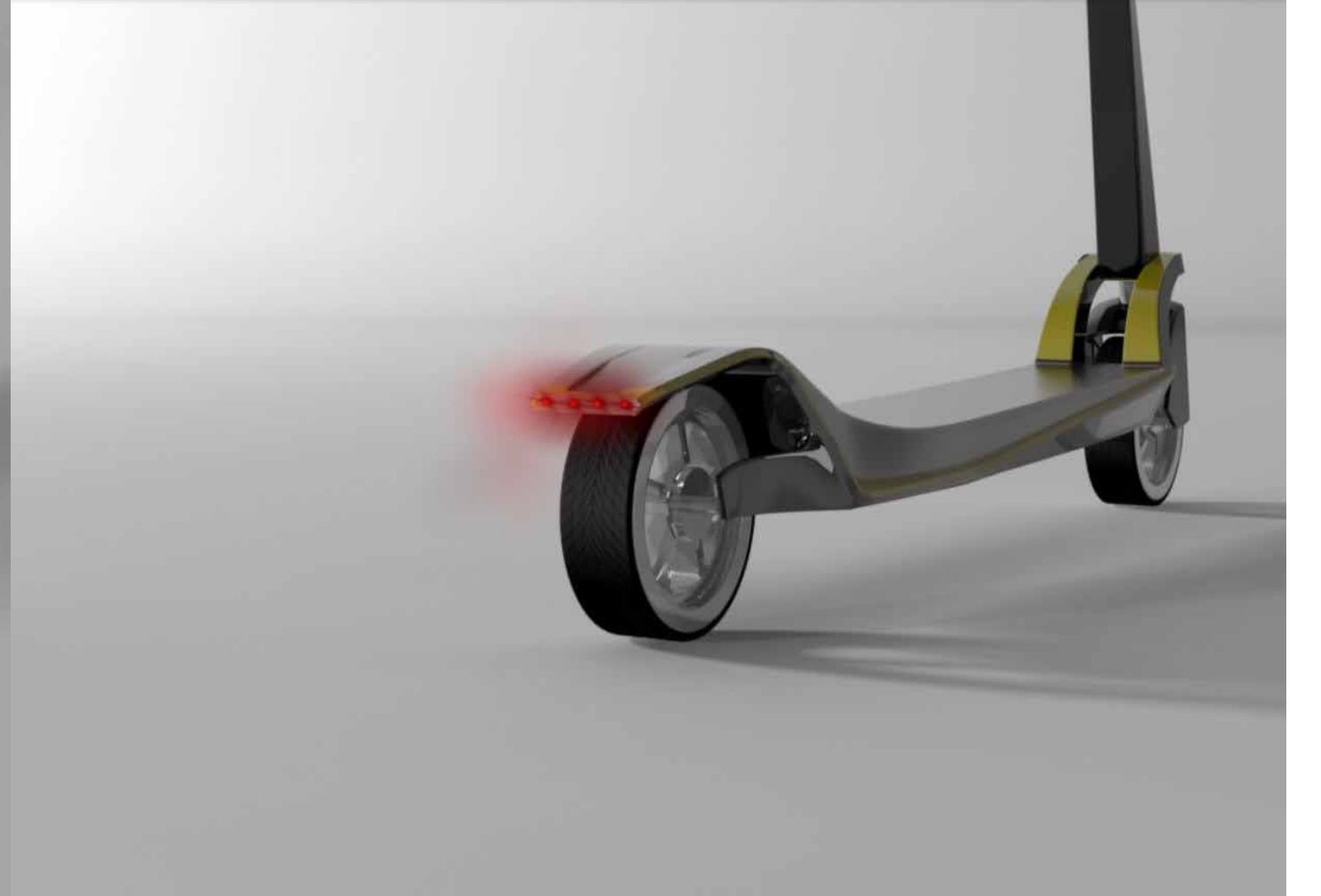
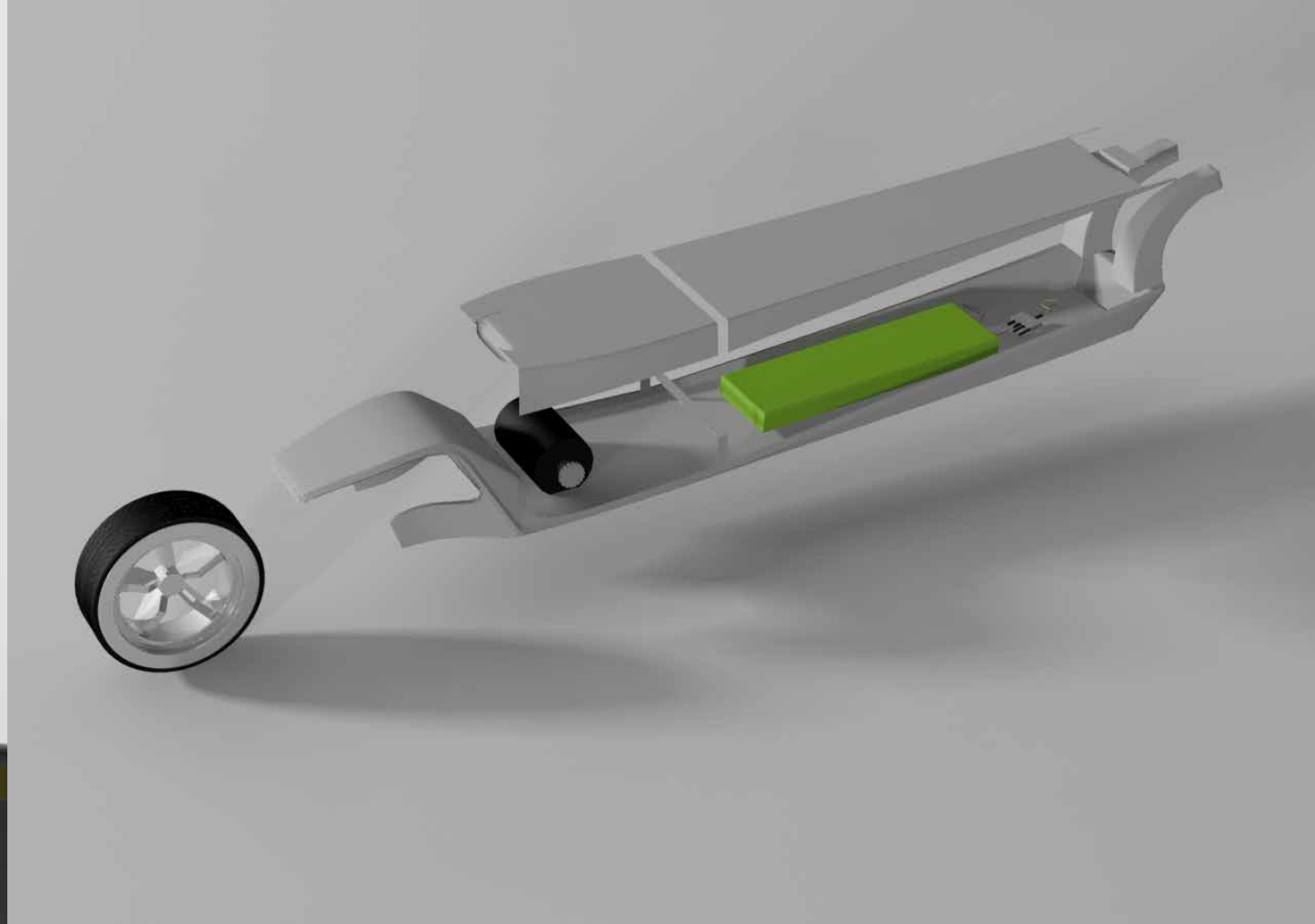
# KEFIR MAKER



# GARBAGE TRUCK

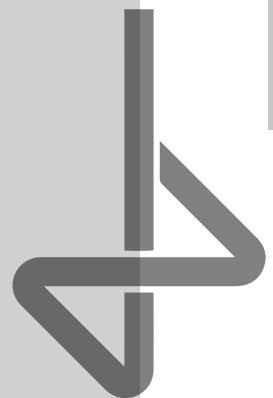
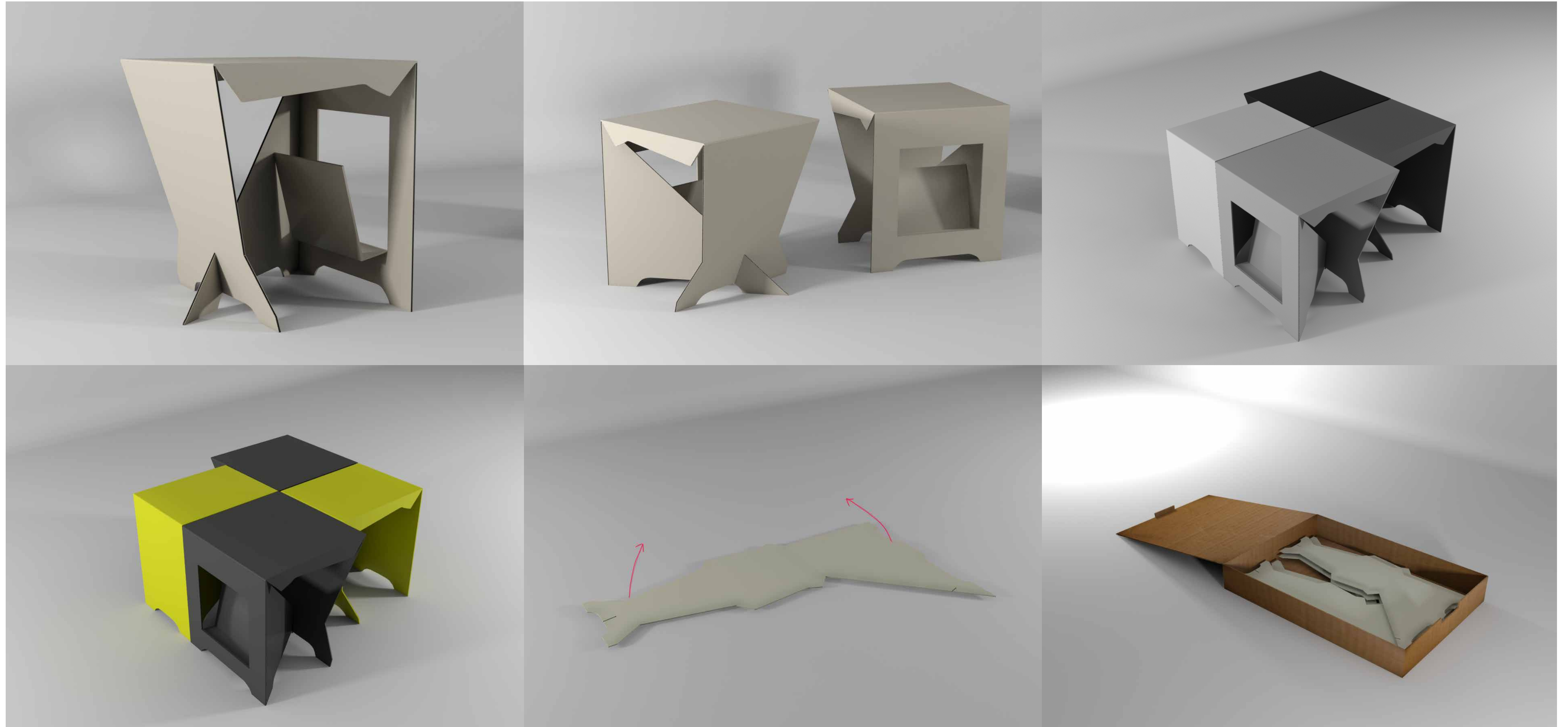


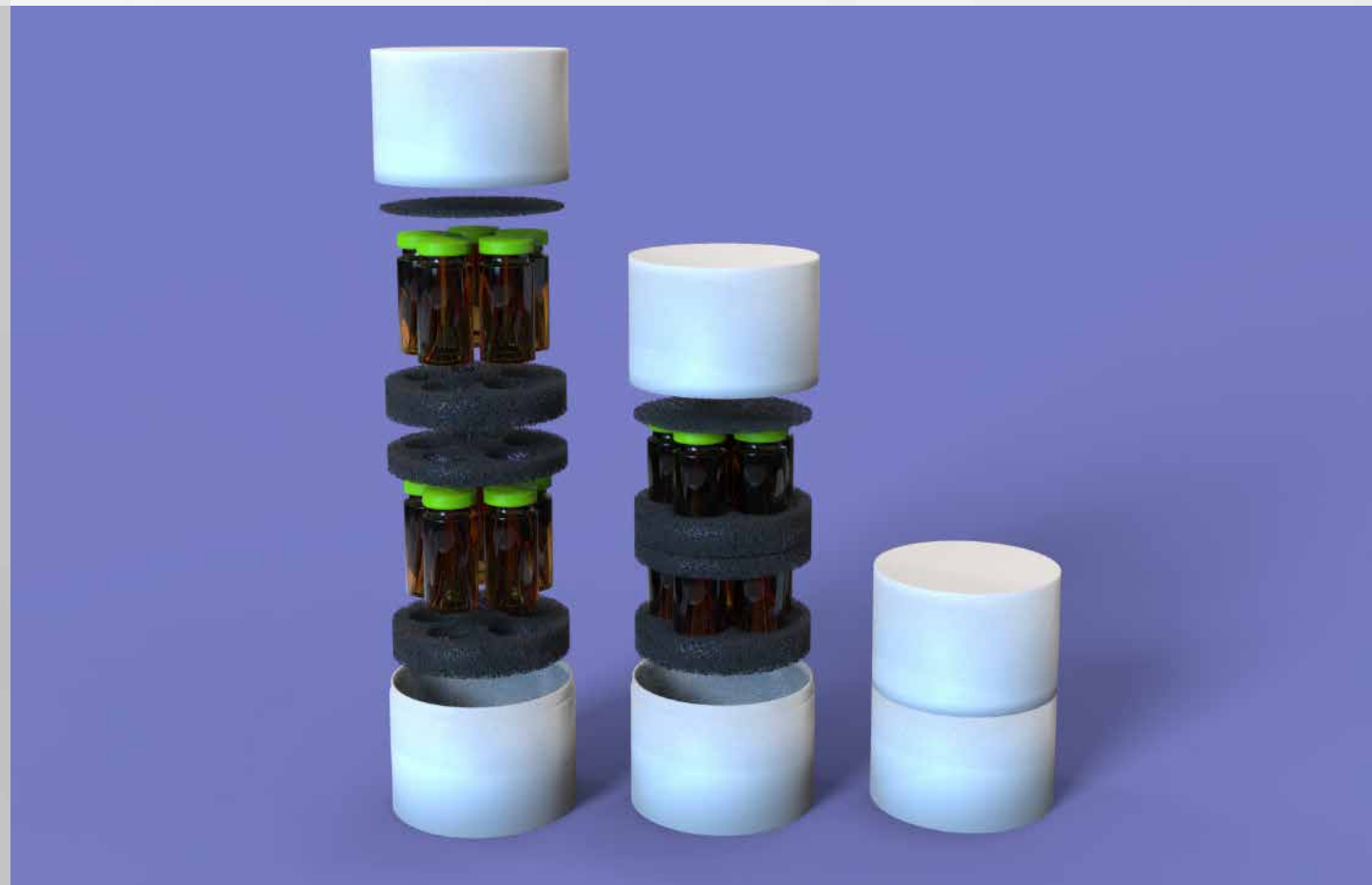
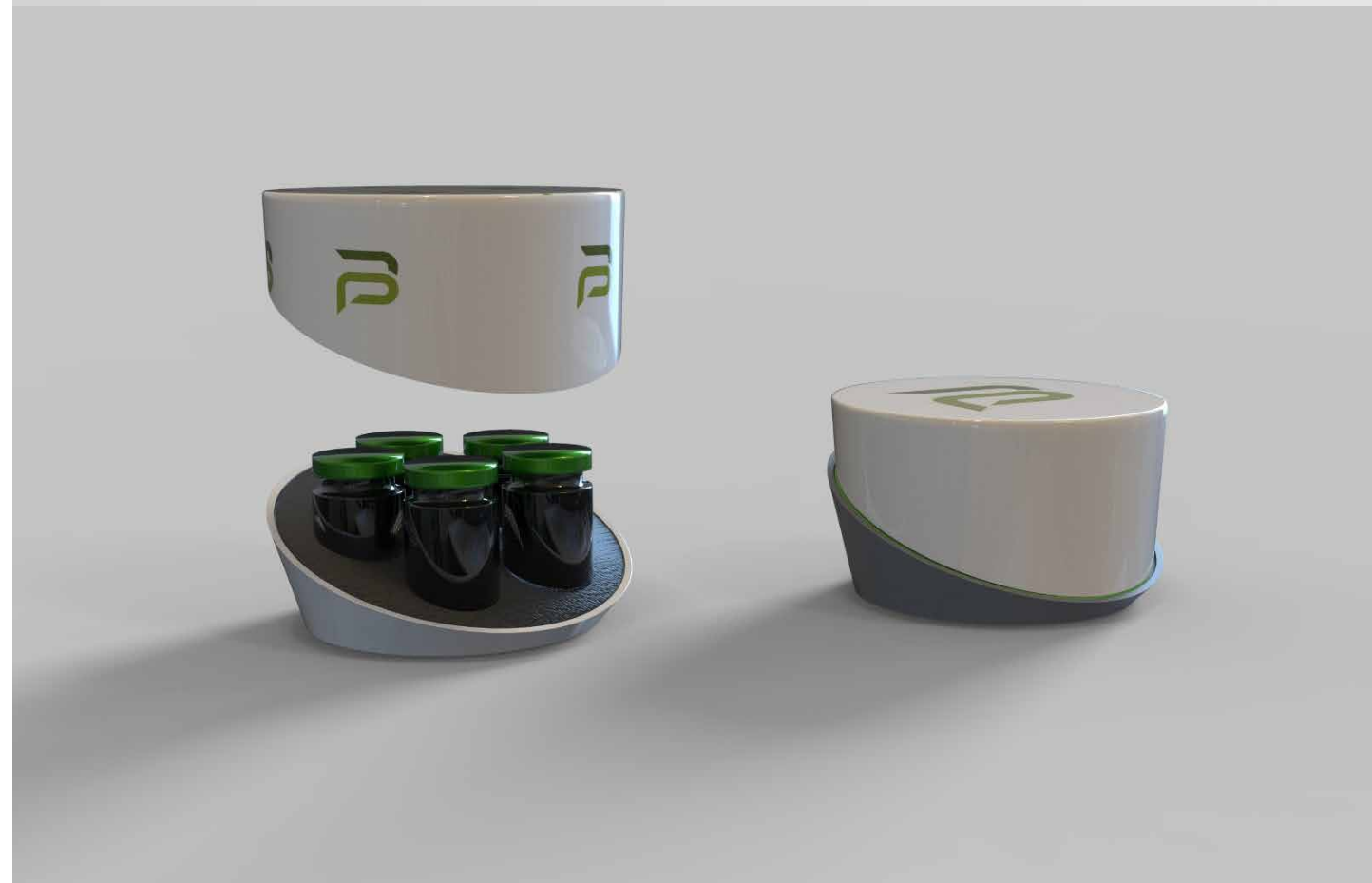
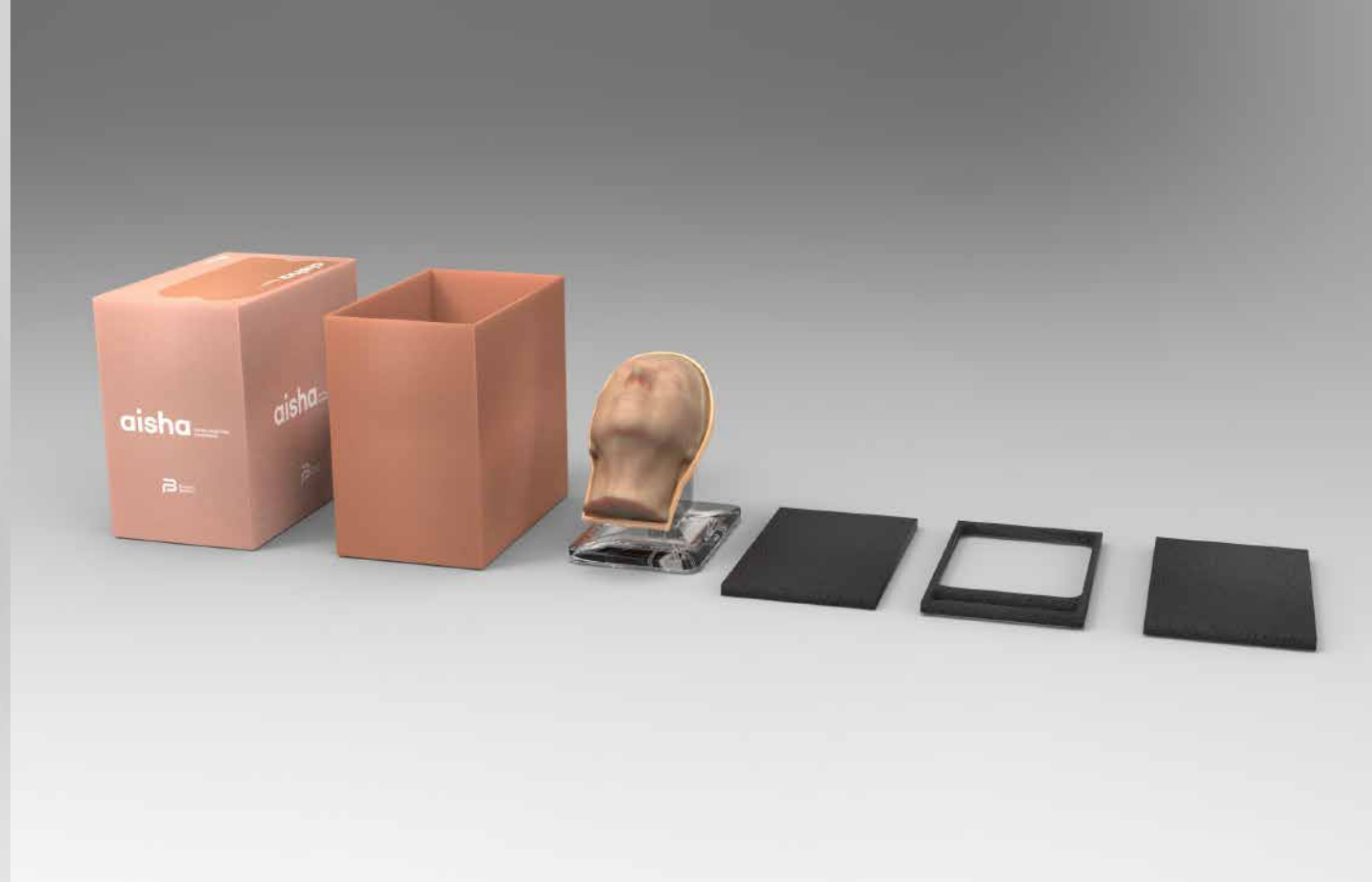
E-SCOOTER



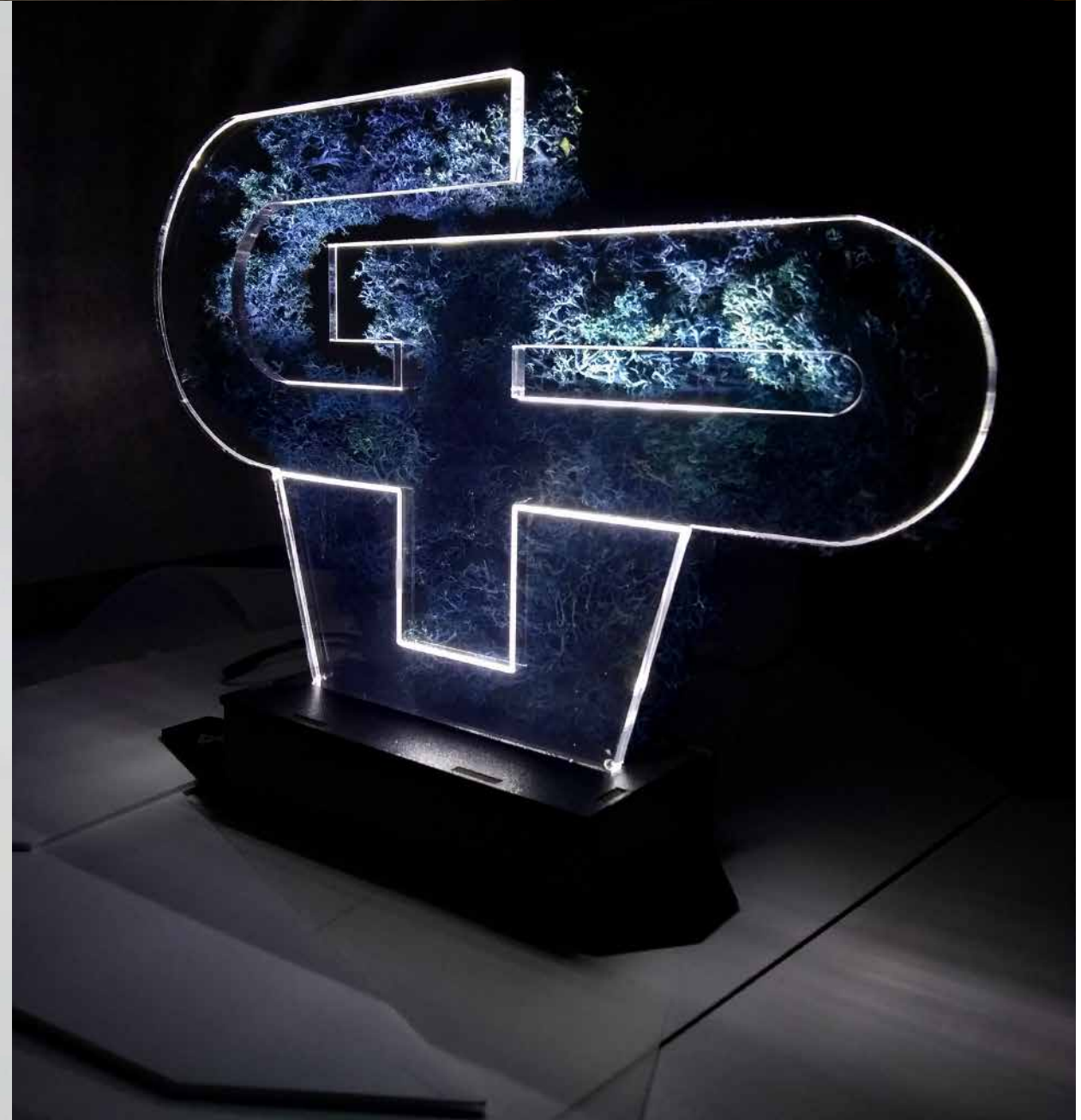


# MODULAR COFFEE TABLE

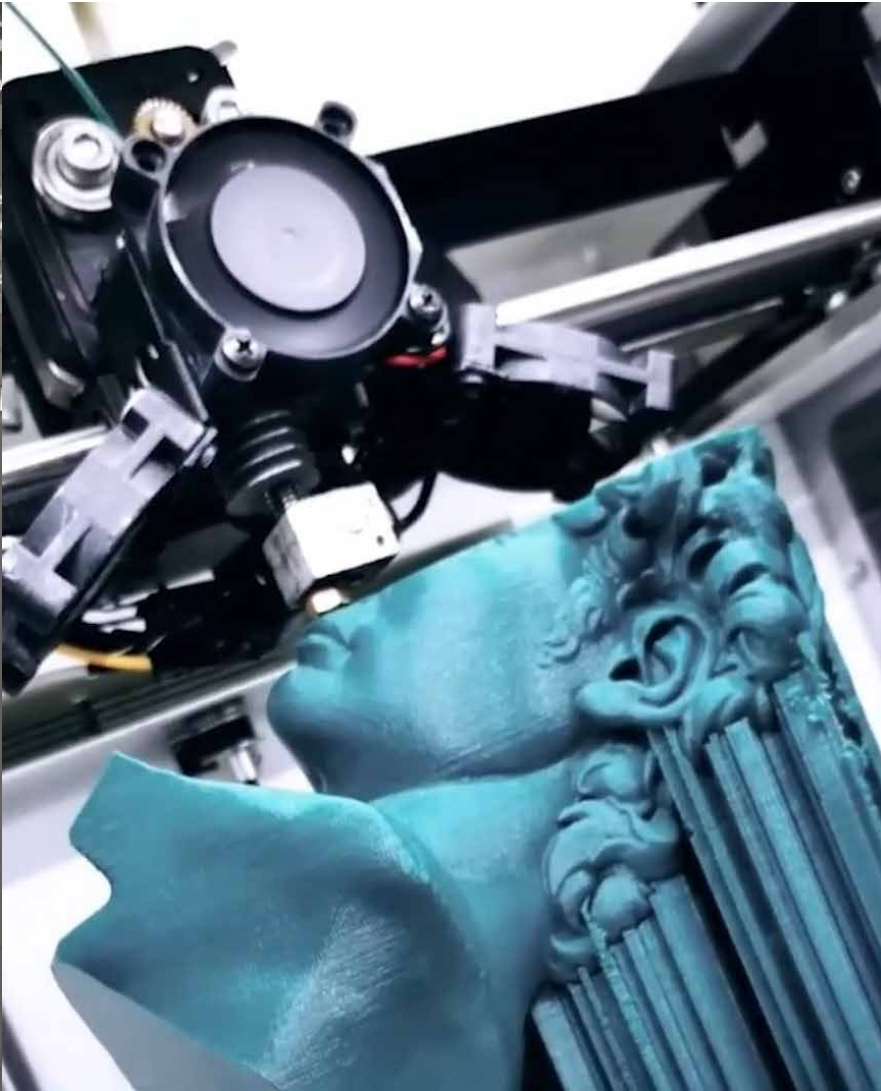


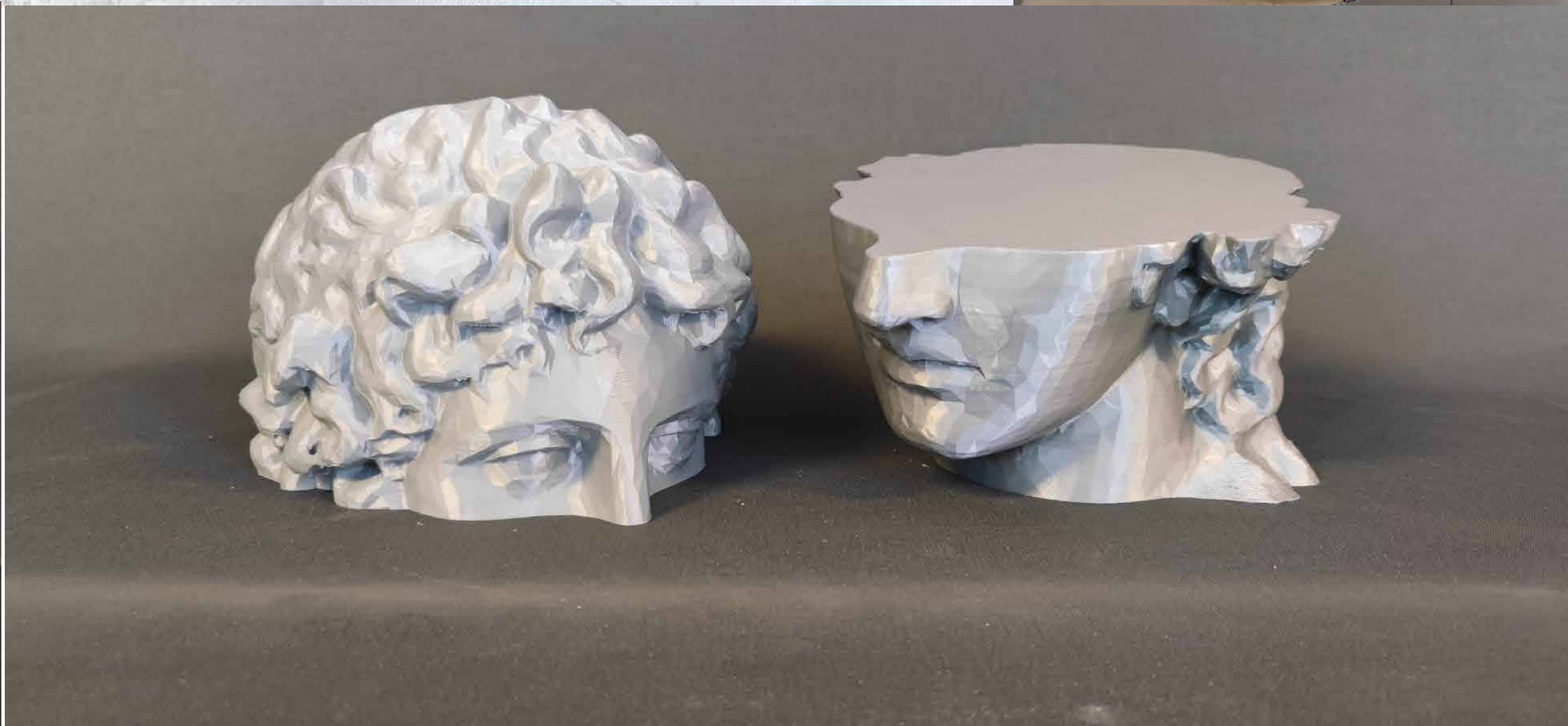






SLICONE MOLDING & PROTOTYPING







Logo variants for HARMAN, NEHA, PERA, SERAPHIM, RUMANA, ELIANA.

HARMAN	NEHA	PERA
SERAPHIM	RUMANA	ELIANA

Alternatif renk (Alternative colors) and Models (various logo styles and color combinations) are shown in a grid format.



ACAR FACTORING logo construction diagram showing the 'A' and 'F' components and their combination.

Business card designs for TURAN KUYUMCULUK 1981, showing front (ÖN) and back (ARKA) views with contact information for Ahmet Emre Turan.



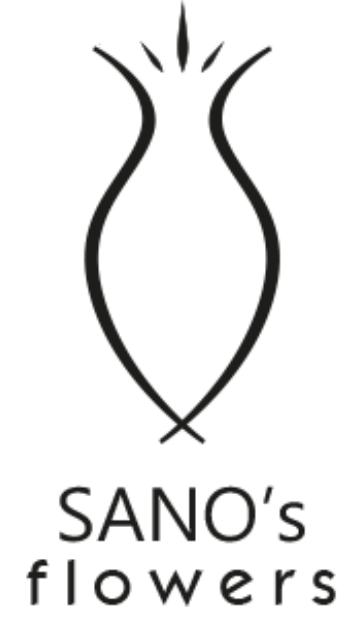
KOCYİĞİT  
MEDİKAL ESTETİK



GÜRİŞ



PS PARSAN



MAXIMUS  
FUNCTIONAL FITNESS

